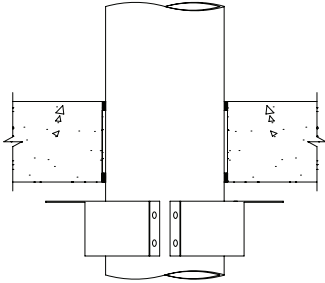
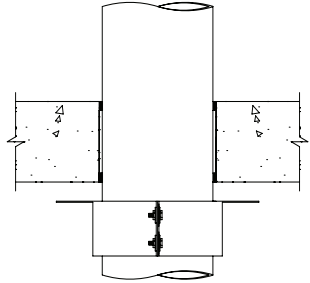


1



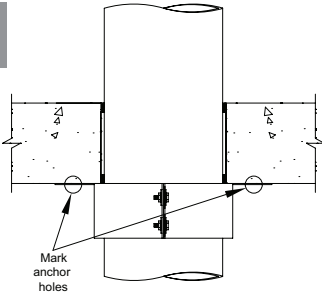
Install SpecSeal[®] Firestop Sealant (if required). With anchor tabs facing the mounting surface, flex collar open and wrap around pipe.

2



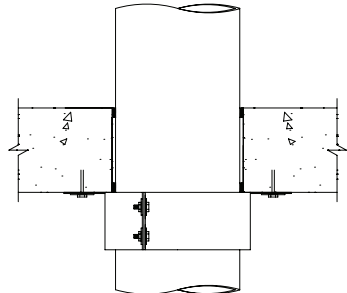
Loosely assemble collar together using provided nuts, bolts and washers at two locations on the collar flange. Insert bolt through flat washer, then through flanges in the collar, followed by a second washer and the nut.

3



Slide collar to wall or floor surface, tighten nuts and bolts and mark anchor holes for drilling at holes in anchor tabs.

4



Install fasteners completely to finish collar installation.

FASTENERS: The following types and sizes of fasteners are required for attachment to floor or wall surfaces.

- **CONCRETE or MASONRY FLOORS OR WALLS:** Steel expansion anchors or concrete screws [1/4" (6 mm) x 1-3/4 (45 mm)] with 1-1/4" (32 mm) steel fender washers or concrete screws.
- **GYPSUM BOARD WALLS or CEILINGS:** 1/8" diameter steel molly bolts or toggle bolts with 1-1/4" (32 mm) steel fender washers.

