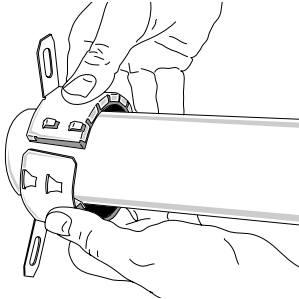
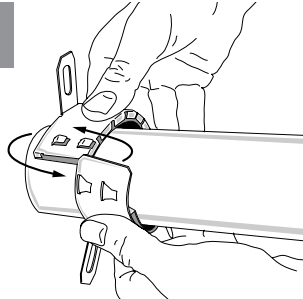


1



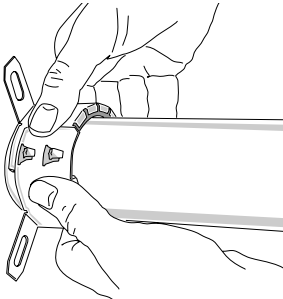
Flex collar open and wrap around pipe; anchor tabs to be facing mounting surface.

2



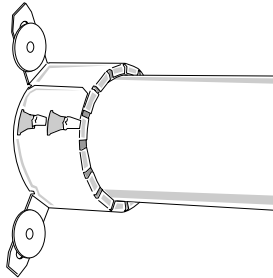
Overlap ends of collar so that the slots align over hook tabs.

3



Press slots down and back (towards mounting surface) over hooks and lock into the closed position.

4



Fasten all collar anchor tabs to mounting surface using approved fasteners.

**FASTENERS:** The following types and sizes of fasteners are required for attachment to floor or wall surfaces.

**CONCRETE or MASONRY FLOORS OR WALLS:** Steel expansion anchors or concrete screws [1/4" (6 mm) x 1-1/4" (32 mm)] with 1" (25 mm) steel fender washers. **GYPSUM BOARD WALLS or CEILINGS:** 1/8" diameter steel molly bolts or toggle bolts with 1" (25 mm) steel fender washers. **WOOD SURFACES:** #8 steel wood screws with 1" (25 mm) steel fender washers. See appropriate UL System for Alternate Fastener types and sizes.

**TABLE A: COLLAR/PIPE DIMENSIONS**

Trade Pipe Size Inches (Metric)	Max Nom Pipe O.D. Inches (Metric)
1.5" (38 mm)	1.9" (48 mm)
2" (51 mm)	2.375" (60 mm)
3" (76 mm)	3.5" (89 mm)
4" (102 mm)	4.5" (114 mm)

Note: For more information on firestop installation, refer to ASTM E3157.

