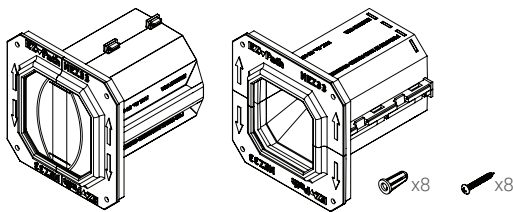


INSTALLATION INSTRUCTIONS

Series 33NEZ Smoke and Acoustical Pathway
(Part Numbers: NEZ33)

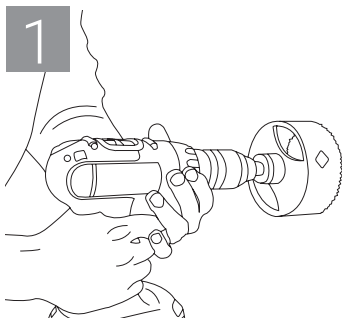
EZ-Path[®]
SMOKE & ACOUSTICAL PATHWAY



Parts Included (Not to Scale)

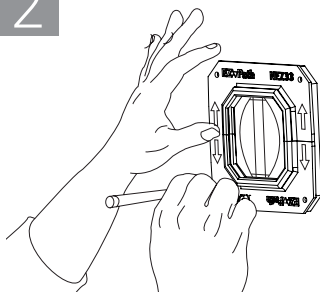
Option 1 - Single Device Installation

1



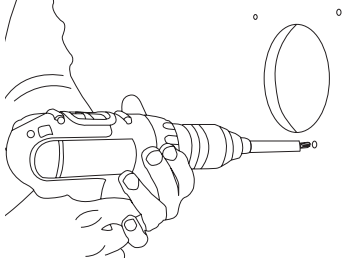
Cut nominal 4 in. (102 mm) diameter opening in wall.

2



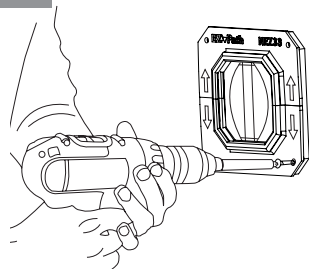
Insert device half into opening and locate the flange mounting holes. Remove sleeve.

3



Drill and insert four mounting anchors into wall using flange openings marked in step 2.

4



Insert outer sleeve and secure to wall. Repeat on opposing side of wall using inner sleeve.

Note: When installing NEZ33 the EZ-Path[®] logo needs to be facing you in the upright position and the arrows should be pointing to the top and bottom of the device. For vertical installations, horizontal supports should be installed. For more information on firestop installation, refer to ASTM E3157.



MEMBER



Scan for more information

Page 1 of 2

Warranty: www.stifirestop.com/legal/warranty
Made in USA • Printed in USA

ZIS1086 2259



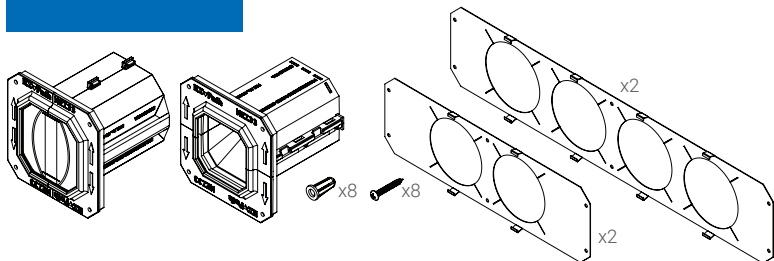
FIRESTOP
SPECIFIED TECHNOLOGIES INC.

Specified Technologies Inc.
Somerville, NJ 08876 USA
T: (800) 992-1180 • F: (908) 526-9623
www.stifirestop.com

INSTALLATION INSTRUCTIONS

EZ-Path[®]
SMOKE & ACOUSTICAL PATHWAY

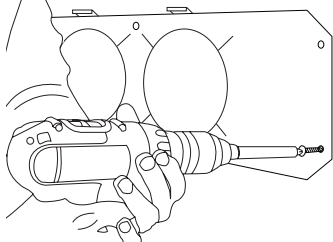
Series 33NEZ Smoke and Acoustical Pathway
(Part Numbers: NEZP233, NEZDP233-W, NEZP433, NEZDP433-W)



Parts Included (Not to Scale)
Devices not included in Part No. NEZP233 and NEZP433

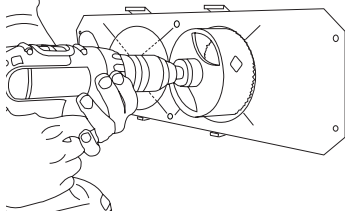
Option 2 - Gang Plate Installation

1



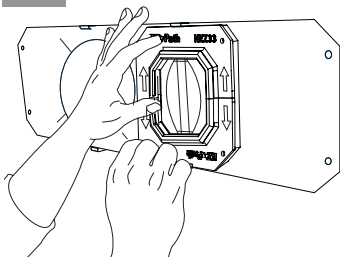
Position and mount gang plate to wall. For 2 gang plate, fasten on 16" (41 cm) centers. For 4 gang plate, fasten on 24" (61 cm) centers.

2



Drill a 4" (102 mm) diameter hole in wall assembly using existing openings in gang plate as a guide for each device required.

3



Insert outer sleeve in opening and attach to gang plate. Repeat on opposing side of wall using inner sleeve.

Note: When installing NEZ33 the EZ-Path[®] logo needs to be facing you in the upright position and the arrows should be pointing to the top and bottom of the device. For vertical installations, horizontal supports should be installed.

For more information on firestop installation, refer to ASTM E3157.



MEMBER



Scan for more information

Page 2 of 2

Warranty: www.stifirestop.com/legal/warranty
Made in USA • Printed in USA

ZIS1086 2259



FIRESTOP
SPECIFIED TECHNOLOGIES INC.

Specified Technologies Inc.
Somerville, NJ 08876 USA
T: (800) 992-1180 • F: (908) 526-9623
www.stifirestop.com