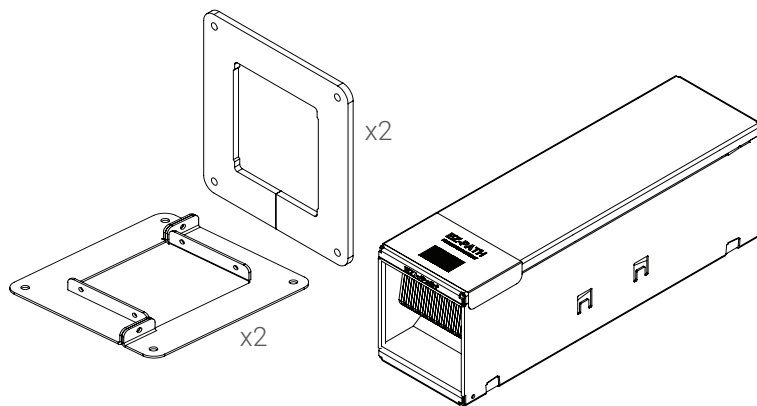
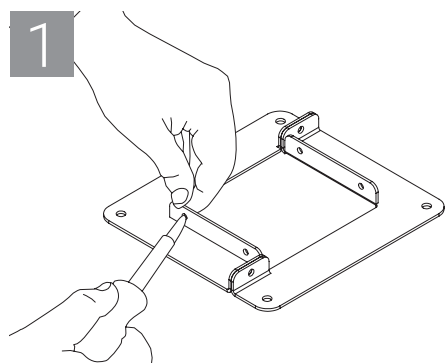


Optional Ground Attachment

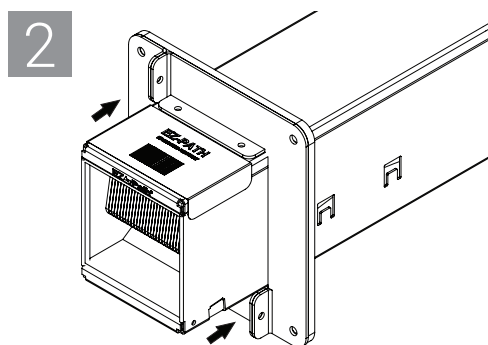


Parts Included (Not to Scale)

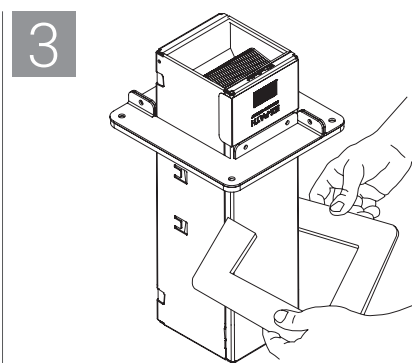
New Work Installation



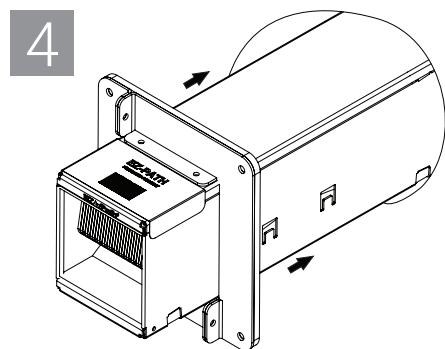
1 Assemble wall plates by using two (2) #10-32 x 5/16" screws and #10-32 nuts.



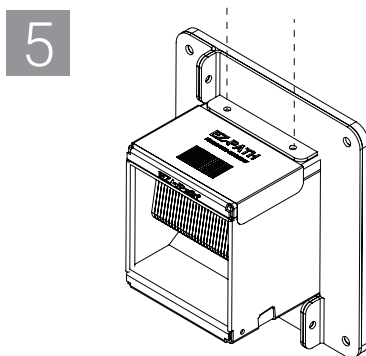
2 Slide pathway into opening in wall plate. Pre position and fasten wall plate to one side of pathway roughly centering pathway within barrier.



3 Slide gasket onto pathway so that when inserted into wall, gasket will be sandwiched between plate and wall.

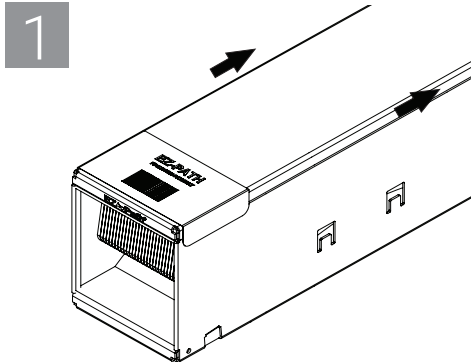


4 Insert pathway into wall opening. If necessary, align plate/pathway with previously drilled holes and secure to wall using appropriate fasteners.

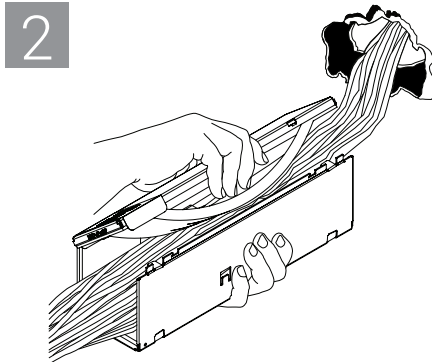


5 Moving to the opposite side of the wall, install remaining gasket and wall plate as detailed above. Tighten set screws to complete installation.

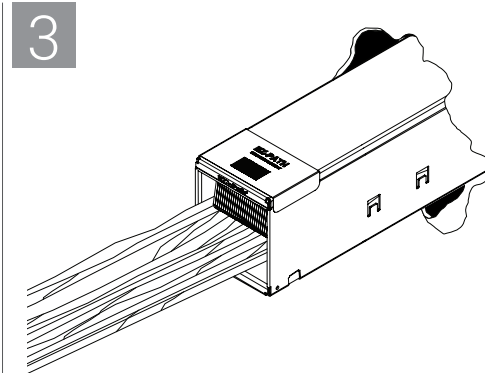
Old Work Installation (Cables Already Installed)



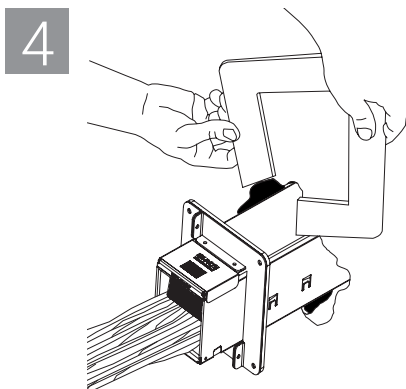
1 Remove lid by compressing device at midpoint of lid, disengaging hook. Slide lid toward label and remove. Cut rubber band securing pads together within device body.



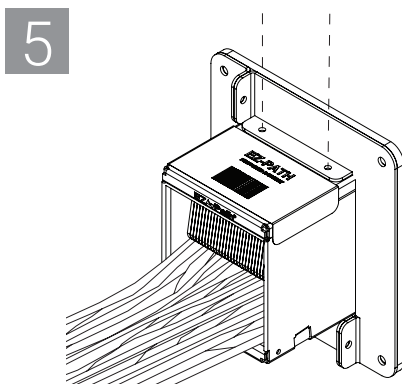
2 Reassemble device lid and body around cables.



3 Place device in opening with ends extending equally from wall surfaces.



4 Place gasket and wall plate around the device.



5 Tighten set screw to secure wall plate to device.