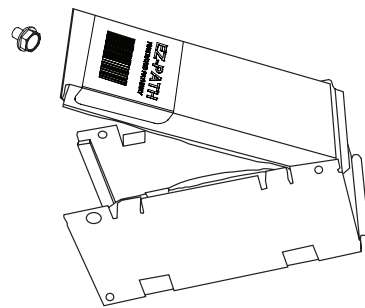
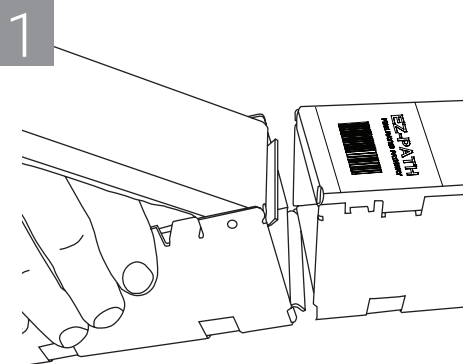


Optional Ground Attachment

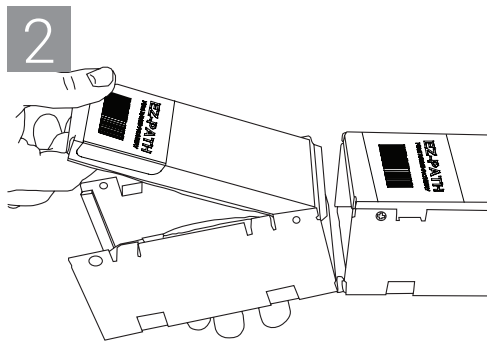


Parts Included (Not to Scale)

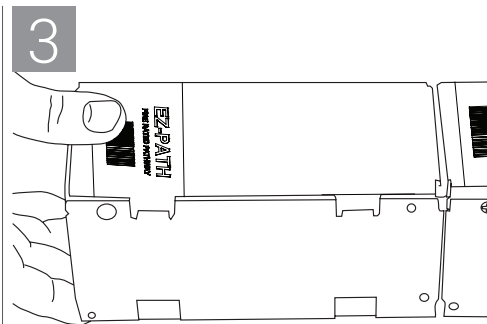
Option 1 - New Work Installations



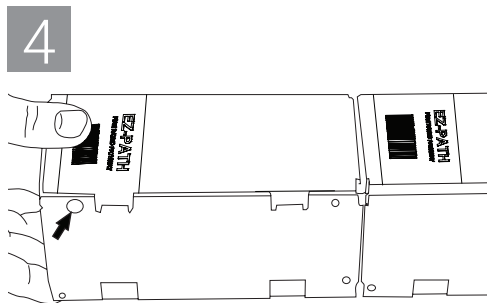
1 Tilt lid from extension channel and insert fixed lower coupler into pathway



2 Tilt extension upward until upper coupler is within pathway



3 Engage upper coupler to top flange on pathway by tilting extension lid downward



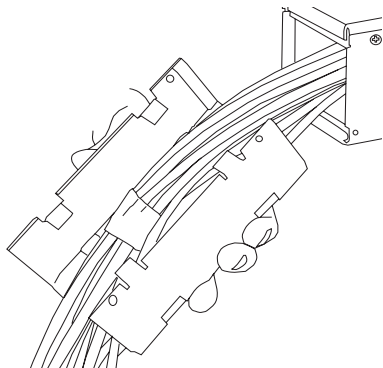
4 Secure closed lid to extension channel by installing and tightening the included screws.





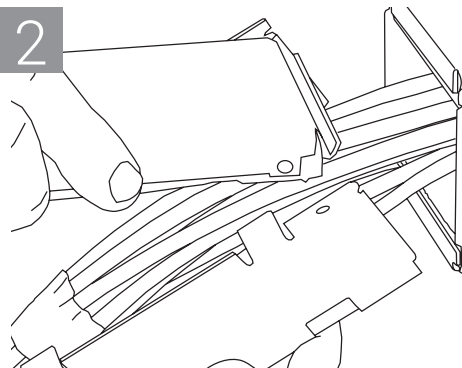
Option 2 - Old Work Installations (Cables Already Installed)

1



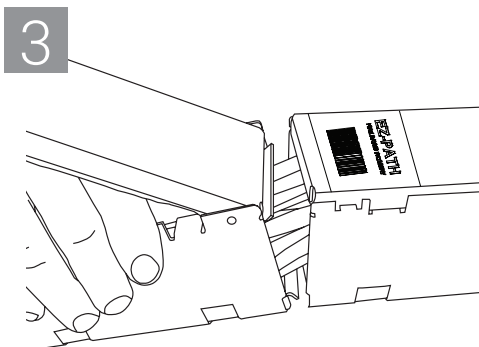
Remove lid and place extension channel around cable bundle

2



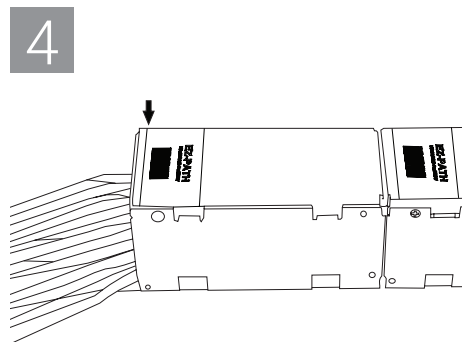
Snap lid onto extension channel

3



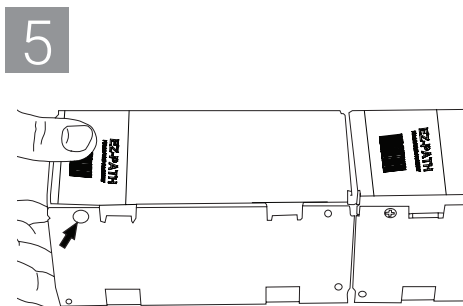
Insert bottom lip of extension channel into device

4



Close lid on extension channel

5



Secure closed lid to extension channel by installing and tightening the included screws

