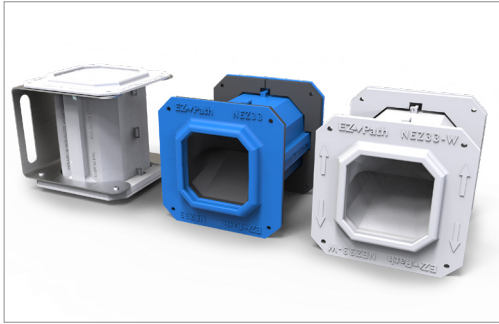




EZ-PATH® SERIES 33NEZ SMOKE & ACOUSTICAL PATHWAY



▼ PRODUCT DESCRIPTION

EZ-Path® Series 33NEZ Smoke & Acoustical Pathway is a pathway device designed to allow cables to penetrate non-rated walls and floors without the need for smoke sealing. This device features a built-in smoke sealing system that automatically adjusts to the amount of cables installed. Once installed in a barrier, cables can be easily added or removed at any time without the need to remove or reinstall caulking materials.

Its octagonal profile allows a maximum number of cables to be installed in a relatively small area. The pathway measures approximately 4.5" (114 mm) x 4.5" (114 mm) and is adjustable to accommodate wall and floor thicknesses between 4" (102 mm) and 8" (203 mm).



▼ APPLICATIONS

EZ-Path® Series 33NEZ Smoke & Acoustical Pathway is designed for easy installation in non-fire-rated walls and floors. Tested and approved cable capacities range from 0 to 100% visual fill.

EZ-Path® Smoke & Acoustical Pathway provides exceptional cable capacity. A single unit installed in a wall exceeds the cable carrying capacity of a 4" (102 mm) sleeve utilizing typical putty firestop systems (35% cable loading). Multiple ganged devices utilizing available duplex, or quad wall plates provide additional capacity or segregation of cables by use, type, installer or vendor as desired.

▼ FEATURES & BENEFITS

- Cable Management by use, type and vendor
- Zero Maintenance - easy moves, adds and changes
- Excellent Acoustical Performance; Low Smoke Leakage Ratings
- Easy to install - can be installed horizontally and vertically
- Retrofittable – retrofit kit comes split apart for old work
- Clean, engineered appearance
- Pathways can be ganged for additional capacity
- Pathway adjusts to accommodate wall and floor thicknesses between 4" (102 mm) & 8" (203 mm)

▼ SPECIFICATIONS

All data, video, and communications cable bundles shall utilize an enclosed smoke and acoustical pathway device wherever said cables penetrate non-fire-rated walls and floors. The smoke and acoustical pathway shall contain a built-in sealing system and shall automatically adjust to the installed cable loading and shall permit cables to be installed, removed, or retrofitted without the need to remove or reinstall acoustical materials. The pathway shall provide an achievable STC rating of greater than or equal to the STC rating of the specific underlying construction per ASTM E90-04/ASTM C919.

▼ PHYSICAL PROPERTIES

Shell Composition	V-0 High Impact ABS/PC Thermoplastic
Seal & Curtain	Flame Retardant, Low-Smoke Silicone Rubber
Cable Loading Area	6.7 in ² (43.2 cm ²)
Allowable Cable Fill	0 - 100%
Wall Area Required (ft ² / Device)	.167 ft ²
In-Service Temp.	-30°F - 130°F (-34°C - 54°C)

▼ CABLE INSTALLATIONS

Cables may easily be added or removed at any time without removing or reinstalling the smoke and acoustical seal. Cables may be added individually or in bundles. Wrapping ends with a low-friction tape facilitates cable insertion. A self-adjusting cable throat automatically adjusts to accommodate the cable bundle as it passes through the pathway.

▼ MAINTENANCE

No maintenance of the pathway is normally required. The exterior seals of the device should be inspected before and after any modifications to the cable bundle.

▼ PERFORMANCE

Max Cable Loading (Visual Fill)	L Rating (CFM/Device)
0%	< 1
100%	< 2.5
Note: L Ratings Tested According to Air Leakage Test Procedure As Outlined in UL1479 without a Fire Test. DEVICE NOT SUITABLE FOR USE IN FIRE RATED BARRIERS.	
Plenum tested to UL2043	
Sound Transmission Classification (STC)	61 (Relates to specific construction) (ASTM E 90-09)

▼ TECHNICAL SERVICE

Technical information including Product Data Sheets, Installation Instructions, Certificates of Conformance, and suggested specifications are available at the company's web site (www.stifirestop.com). For all other information, contact the manufacturer directly by dialing (800) 992-1180.



Technical Service 1-800-992-1180
www.stifirestop.com

Specified Technologies Inc. • Product Data Sheet
 EZ-Path® Smoke & Acoustical Pathway • ZSFOD5190 0878



EZ-PATH® SERIES 33NEZ SMOKE & ACOUSTICAL PATHWAY

▼ PRECAUTIONARY INFORMATION

The use of this device is subject to local, regional and national codes. Consult the local Building Code Official or Authority Having Jurisdiction regarding any regional or local requirements that might influence the selection or use of this product. **Note: For use in non-fire-rated construction only.**

▼ AVAILABILITY

See Ordering Information below. EZ-Path® Smoke & Acoustical Pathway Products are available from designated authorized STI distributors. Consult the factory or visit the web site (www.stifirestop.com) for the names and locations of the nearest sales representatives or distributors.

▼ ORDERING INFORMATION

UPC# 730573	Cat. No.	Description	Qty.	Case Qty.	Weight (Ea.)
11158	NEZ33	EZ-Path® Series 33NEZ Smoke and Acoustical Pathway (Device Only) with hardware	1	4	0.90 lbs (0.41 kg)
11166	NEZ33-W	EZ-Path® Series 33NEZ Smoke and Acoustical Pathway White, (Device Only) with hardware	1	4	0.90 lbs (0.41kg)
11165	NEZ33R	EZ-Path® Series 33NEZ Smoke & Acoustical Pathway Retrofit Device	2	2	1.075 lb (0.49 kg)
11159	NEZDP233	EZ-Path® Series 33NEZ Smoke and Acoustical Pathway Two Gang Kit (2 NEZ33 Pathways & 2 NEZP233 Two Gang Plates)	1	N/A	2.80 lbs (1.27 kg)
11160	NEZDP433	EZ-Path® Series 33NEZ Smoke and Acoustical Pathway Four Gang Kit (4 NEZ33 Pathways & 2 NEZP433 Four Gang Plates)	1	N/A	4.82 lbs (2.20 kg)
11161	NEZP233	EZ-Path® Series 33NEZ Smoke and Acoustical Pathway Two Gang Plate Kit (Plates Only)	1	N/A	1.00 lbs (0.45 kg)
11162	NEZP433	EZ-Path® Series 33NEZ Smoke and Acoustical Pathway Four Gang Plate Kit (Plates Only)	1	N/A	1.22 lbs (0.55 kg)
11168	NEZ33CK2	EZ-Path® Series 33NEZ Smoke and Acoustical Pathway White, (Device Only) with Ceiling Kit	1	1	1.92 lbs (0.87 kg)

IMPORTANT NOTICE: ALL STATEMENTS, TECHNICAL INFORMATION, AND RECOMMENDATIONS CONTAINED HEREIN ARE BASED UPON TESTING BELIEVED TO BE RELIABLE, BUT THE ACCURACY AND COMPLETENESS THEREOF IS NOT GUARANTEED.

STI TYPICALLY WARRANTS ITS PRODUCTS FOR ONE FULL YEAR. FOR COMPLETE DETAILS OF OUR STANDARD WARRANTY, PLEASE VISIT WWW.STIFIRESTOP.COM/LEGAL/WARRANTY

MADE IN THE USA – © 2018 SPECIFIED TECHNOLOGIES INC.



Specified Technologies Inc.
Somerville NJ 08876
Phone: 800.992.1180
Fax: 908.526.9623



Technical Service 1-800-992-1180
www.stifirestop.com

Specified Technologies Inc. • Product Data Sheet
EZ-Path® Smoke & Acoustical Pathway • ZSFOD5190 0878