

# SmokeBlock<sup>®</sup> 200

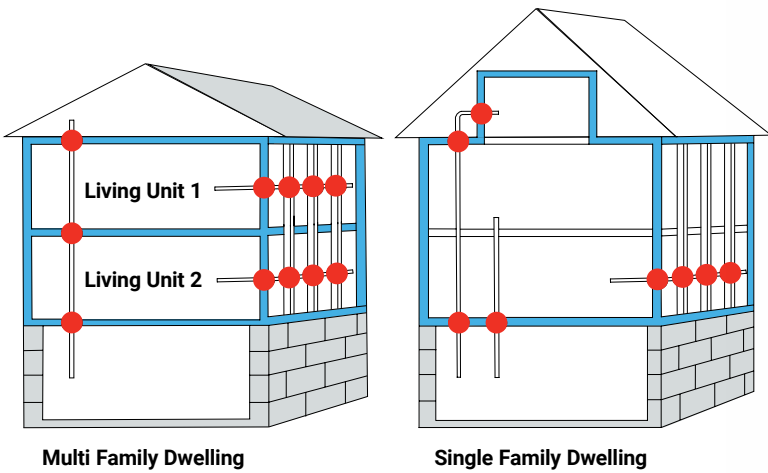
N O N - C O M B U S T I B L E S P R A Y F O A M

## SmokeBlock<sup>®</sup> Fireblocking Foam

**SmokeBlock<sup>®</sup> Fireblocking Foam** installs in seconds filling voids and annular spaces around penetrants preventing the spread of smoke and hot gasses. **SmokeBlock<sup>®</sup> Fireblocking Foam** can be applied in both vertical and horizontal applications and is suitable to use in one and two family dwellings. Not suitable for use in fire-rated construction.

### Features & Benefits

- Meets Fireblock/Draftstop requirements of IBC Section 718 & IRC Section R302.11
- Adheres to wood and masonry
- Dispensable at any angle
- Paintable



### ORDERING INFORMATION

Catalog Number	UPC Number	Description	(UOM) Qty.	Case Qty.	Weight (Each)
SB200	73057301161	SmokeBlock <sup>®</sup> Fireblocking Foam (12 Oz. Can)	1	12	1.07 lbs (0.49 kg)



1-800-992-1180  
stifirestop.com



[Click here to learn more about](#)



ZSTI3498-1589