

SpecSeal®

CID

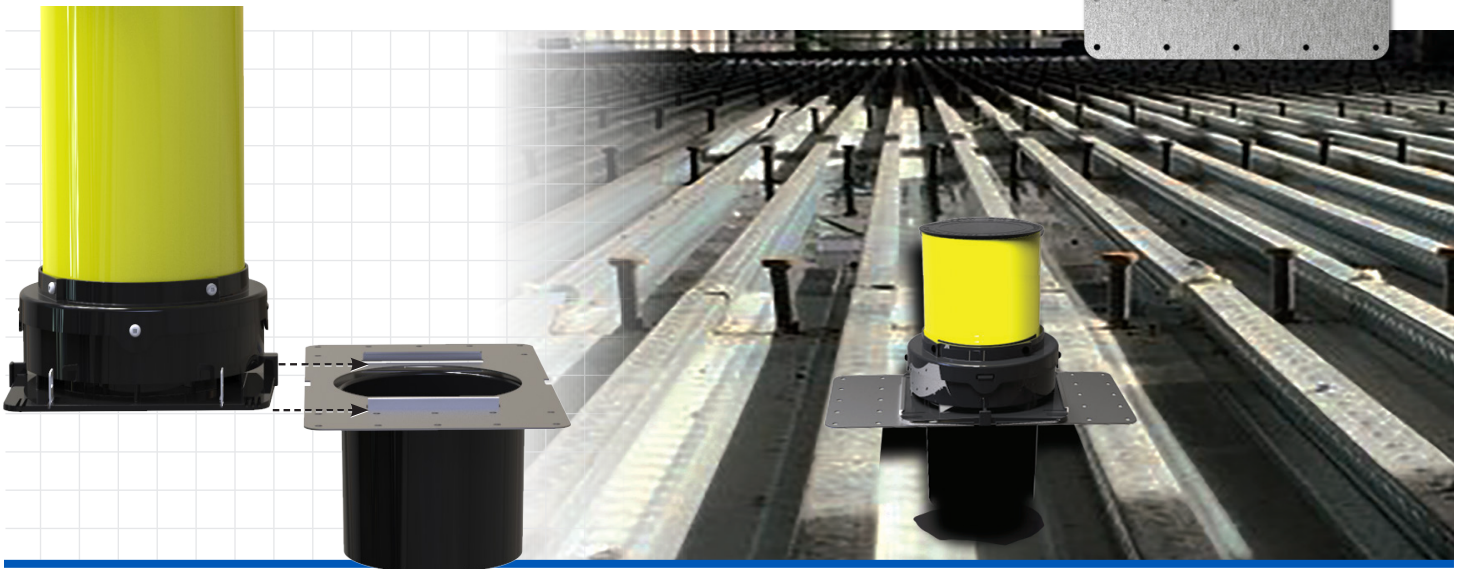
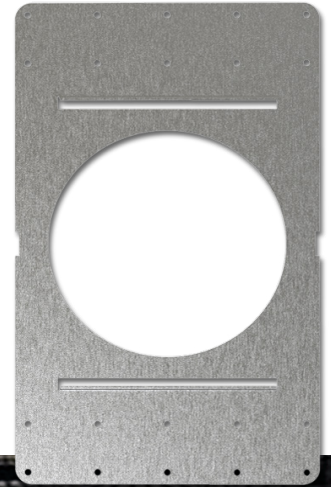
DEVICES FOR COMBUSTIBLE AND NON-COMBUSTIBLE PENETRANTS

Cast-In Deck Adapter Kits

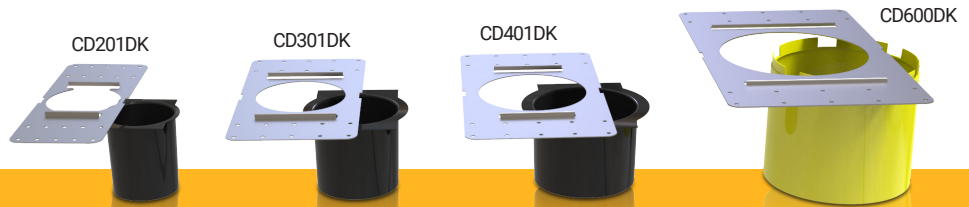
The Cast-In Deck Adapter kits are used in conjunction with our Cast-In Devices for easy installation for concrete over fluted metal decking applications.

Features & Benefits

- Combines with 1-1/2", 2", 3" & 4" SpecSeal® Cast-in Devices
- Easy installation directly to fluted steel decking
- Provides rigid support for SpecSeal® Cast-in Devices



Ordering Information



| UPC# 730573 | CAT NO. | PIPE TRADE SIZE | DECK PLATE FOOTPRINT | NOMINAL STEEL DECK OPENING SIZE | QTY | CASE QTY | WEIGHT |
|-------------|---------|---------------------------------|--------------------------------------|---------------------------------|-----|----------|--------------------|
| 34208 | CD201DK | 1.5 in. (38 mm) - 2 in. (51 mm) | 4 in. x 10-3/8 in. (101 mm x 264 mm) | 3-5/8 in. (93 mm) | 1 | 6 | 0.48 lbs (0.21 kg) |
| 34309 | CD301DK | 3 in. (76 mm) | 5-3/4 x 11 in. (146 x 280 mm) | 4-1/4 in. (108 mm) | 1 | 6 | 0.54 lbs (0.25 kg) |
| 34410 | CD401DK | 4 in. (102 mm) | 6-3/4 x 12 in. (172 x 305 mm) | 5-1/4 in. (134 mm) | 1 | 6 | 0.67 lbs (0.30 kg) |
| 34603 | CD600DK | 6 in. (152 mm) | 9 x 15 in. (229 X 381 mm) | 7-1/4 in. (184 mm) | 1 | 6 | 1.90 lbs (0.86 kg) |

TEST STANDARDS*: ASTM E814 (UL 1479), CAN/ULC S115
 *When installed in conjunction with a SpecSeal® Cast-In Firestop Device



1-800-992-1180
 stifirestop.com



[Click here to learn more about](#)

