



# MBD

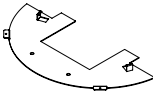
## MARINE BUSBAR FIRESTOP DEVICE

MADE  
IN USA

### INSTALLATION INSTRUCTIONS INSTRUCCIONES • MODE D'EMPLOI



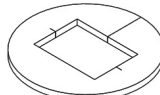
Nut (x6)



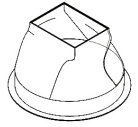
Top Plate (x2)



Bottom Plate (x2)

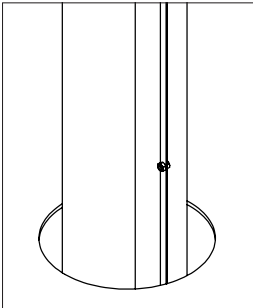


Intumescent Foam (x1)

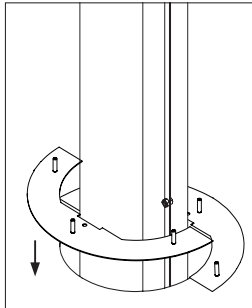


Boot (x1)

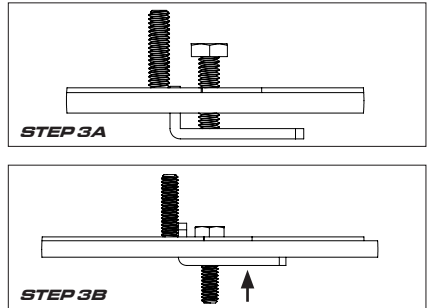
#### STEP 1



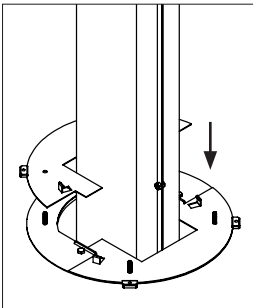
#### STEP 2



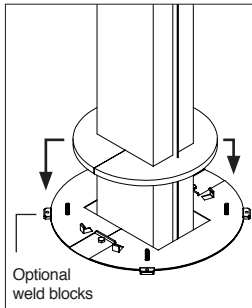
#### STEP 3A + 3B



#### STEP 4

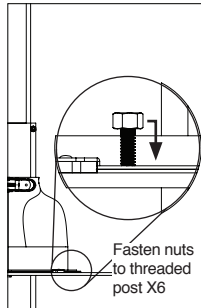


#### STEP 5



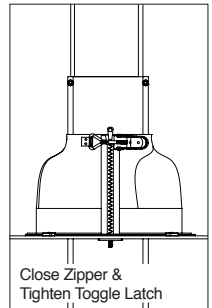
Optional  
weld blocks

#### STEP 6



Fasten nuts  
to threaded  
post X6

#### STEP 7



Close Zipper &  
Tighten Toggle Latch

WARRANTY INFORMATION: [www.stimarine.com/legal/warranty](http://www.stimarine.com/legal/warranty)

MADE IN THE USA | COPYRIGHT © 2017 STI MARINE FIRESTOP - A DIVISION OF SPECIFIED TECHNOLOGIES INC.

Somerville, NJ 08876 USA  
US Toll Free: (800) 992-1180 • Outside US: + 1 908 526 8000  
[www.stimarine.com](http://www.stimarine.com) • ZIS1080 3527

