



MFC

MARINE FIRESTOP COLLARS

COLLAR CONTRA FUEGO
COLLIER COUPE-FEU

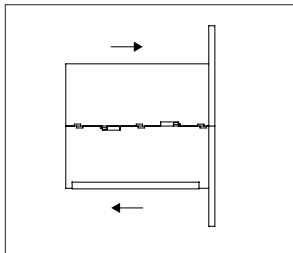


INSTALLATION INSTRUCTIONS

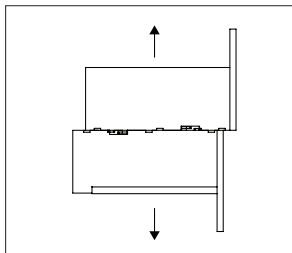
MFC16, MFC20, MFC25, MFC32, MFC40

INSTRUCCIONES • MODE D'EMPLOI

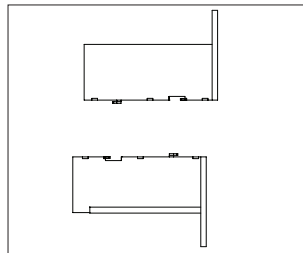
1A.



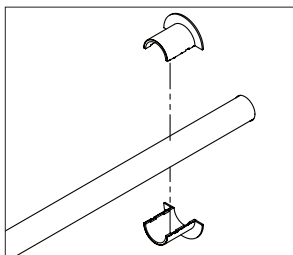
1B.



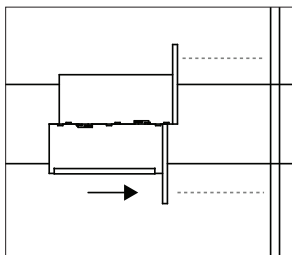
1C.



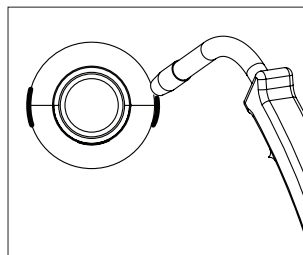
2A.



2B.



3.



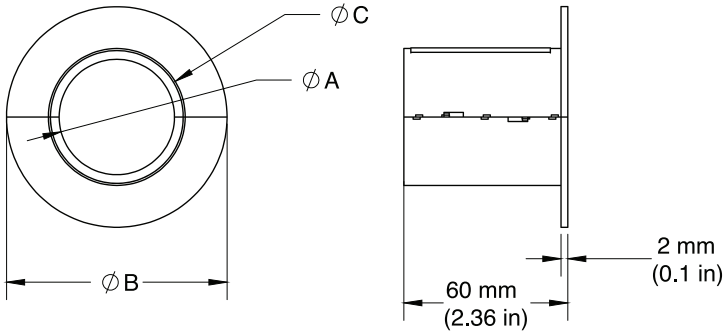
LIMITED WARRANTY: STI warrants that its products will be free of defects for one year from the date of purchase. In the event a product does not conform to this warranty, the sole and exclusive remedy is, at STI's option, replacement of the product or refund of the purchase price. The warranty provided herein shall be void and of no effect in the event that the product is not installed in accordance with STI's published instructions, listed systems and applicable building and safety codes. THIS WARRANTY IS IN LIEU OF ALL OTHER REPRESENTATIONS AND EXPRESSED OR IMPLIED WARRANTIES (including the implied warranties of merchantability or fitness for a particular use) AND UNDER NO CIRCUMSTANCES SHALL STI BE LIABLE FOR ANY DIRECT, INDIRECT, SPECIAL, INCIDENTAL OR CONSEQUENTIAL DAMAGES OR LOSSES, INCLUDING, WITHOUT LIMITATION, ANY LOSS OF REVENUE, PROFIT OR USE. Prior to use, the user shall determine the suitability of the product for its intended use, and the user assumes all risks and liability for subsequent use. No person other than an officer of STI is authorized to bind STI to any other warranty for any product for which this warranty is issued.

COPYRIGHT © 2014 SPECIFIED TECHNOLOGIES INC.

Somerville, NJ 08876 USA
US Toll Free: (800) 992-1180 • Outside US: + 1 908 526 8000
www.stimarine.com • ZIS1082-2773



COLLAR DIMENSIONS:



	Pipe Outer ϕ (A)		B		C		OPENING NEEDED	
	mm	in	mm	in	mm	in	mm ± 5	in ± 0.2
MFC16	16	0.6	56	2.2	26	1.0	30	1.2
MFC20	20	0.8	60	2.4	30	1.2	30	1.2
MFC25	25	1.0	65	2.6	35	1.4	30	1.2
MFC32	32	1.3	72	2.8	42	1.7	45	1.8
MFC40	40	1.6	80	3.1	50	2.0	50	2.0