



## MDM400 Marine Fire Rated Pathways

**Cable raceway device consisting of heavy gauge steel shell with self-adjusting intumescent liners to allow cables to pass through fire-rated bulkheads and decks while providing a maintenance-free alternative to traditional cable transits in non-water-tight divisions**

### PRODUCT FEATURES:

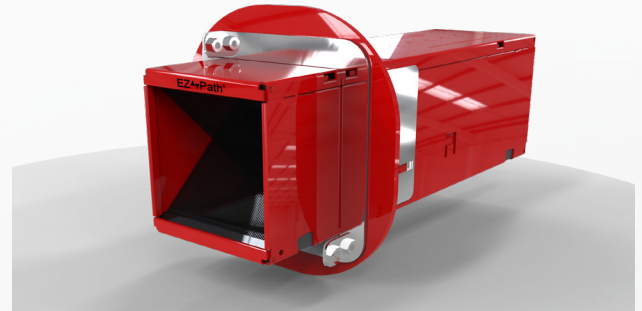
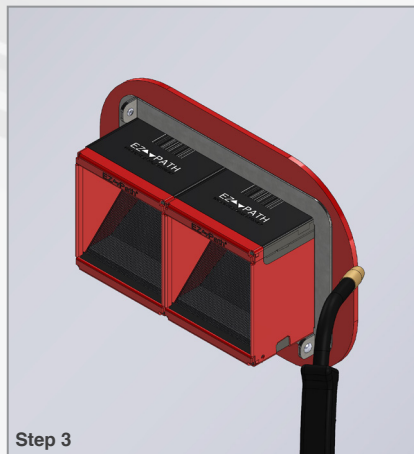
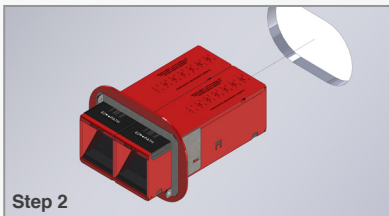
- Tested to IMO FTP Code 2010, Annex 1, Part 3 (Class A-0 through A-60 and H-0 through H-120 Bulkheads and Decks)
- Most cost effective solution for new cable installations
- Self-adjusting cable sealing liners allow for easy retrofit of cable moves, additions, and changes for existing installations
- Modular units can be installed together with available gang plates
- Device splits apart to allow for retrofit around existing cables.
- Rapid intumescent expansion under fire conditions quickly seals off the path for fire, gases, and smoke
- Allows 0 to 100% visual fill of cables
- Empty devices can be installed for future use
- Maximizes volume of cable that can be installed into a given space while reducing the overall footprint
- Protection of cable jacketing and insulation materials
- Galvanized steel shell with marine-grade powder coating used with single or gang plates
- Flexible intumescent liners accommodates vibration
- Resistant to aging and weathering

### INSTALLATION INSTRUCTIONS:

General Notes: Read Safety Data Sheets (SDS) and product label for safe handling.

#### New Installations:

- Step 1:** Cut a circular or square opening into deck or bulkhead.
- Step 2:** Install solid or split plate kits onto device. If installing multiple devices, connect devices together with integral hook and eye attachments on side of each unit.
- Step 3:** Insert device(s) through opening and secure the plate to deck or bulkhead by means of steel screws or welds.



### THIRD PARTY APPROVALS:



### PHYSICAL PROPERTIES:

Property – As Supplied	Value
<b>Shell Composition:</b>	1.5 mm thick (0.059") galvanized steel
<b>Flange Composition:</b> <i>Flanges available separately</i>	Nom. 50 KSI ABS-Approved mild steel
<b>Powder Coating:</b>	Marine-Grade
<b>Physical Dimensions:</b>	102 x 118 x 356 mm (4 x 4-5/8 x 14 in.)
<b>Cable Loading Area:</b>	82 cm <sup>2</sup> (12.7 sq. in.) Max. 79 mm (3-3/8 in.) diam.
<b>Expansion Begins :</b>	160°C (320°F)
<b>Expansion Volume:</b>	800%
<b>In-Service Temperature:</b>	-23°C to 49°C (-10°F to 120°F)
<b>Storage Temperature:</b>	< 49°C (120°F)
<b>Shelf Life:</b>	No limit

### MAINTENANCE:

Maintenance free. Observed damage can be repaired per the original approved design.



## MDM400 Marine Fire Rated Pathways

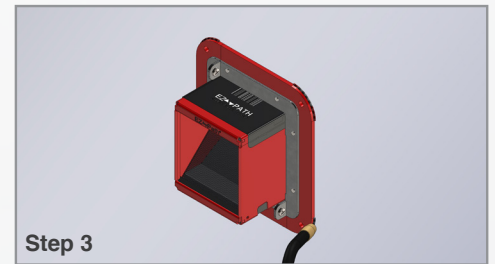
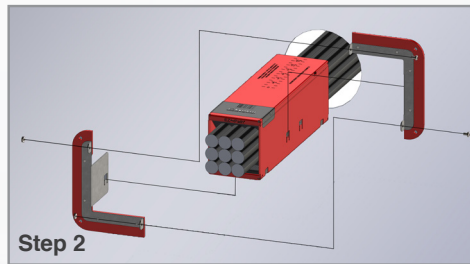
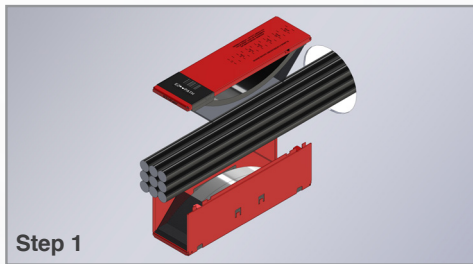
### INSTALLATION INSTRUCTIONS:

#### Retrofit Installations:

**Step 1:** Remove lid from device body to capture cable bundle. Re-install lid.

**Step 2:** Slide device through opening and secure with split plate kit. If installing multiple devices, connect devices together with integral hook and eye attachments on side of each unit.

**Step 3:** Secure the plate to deck or bulkhead by means of steel screws or welds.



### ORDERING INFORMATION:

EZ-Path® Marine Fire Rated Pathways for are available from STI Marine Distributors. Contact regional STI office for more information.

UPC# 730573	CAT NO.	DESCRIPTION	CASE QTY	WEIGHT
40088	MDM400A	Marine 400 Single Solid Plate Kit and Pathway Unit	1	3.9 kg (8.6 lbs)
40046	MDM400B	Marine 400 Single Split Plate Kit and Pathway Unit	1	3.9 kg (8.6 lbs)
40047	MDM400C	Marine Two-Gang Solid Plate Kit with Two Pathway Units	1	6.7 kg (14.9 lbs)
40048	MDM400D	Marine Two-Gang Split Plate Kit with Two Pathway Units	1	7.8 kg (17.2 lbs)
40445	MDM400G	Marine 400 Four-Gang Solid Plate Kit with Four Pathway Units	1	12.3 kg (27.3 lbs)

### WARRANTY INFORMATION:

[www.stimarine.com/legal/warranty](http://www.stimarine.com/legal/warranty)

MADE IN THE USA – COPYRIGHT © 2018 STI MARINE FIRESTOP, A DIVISION OF SPECIFIED TECHNOLOGIES INC.