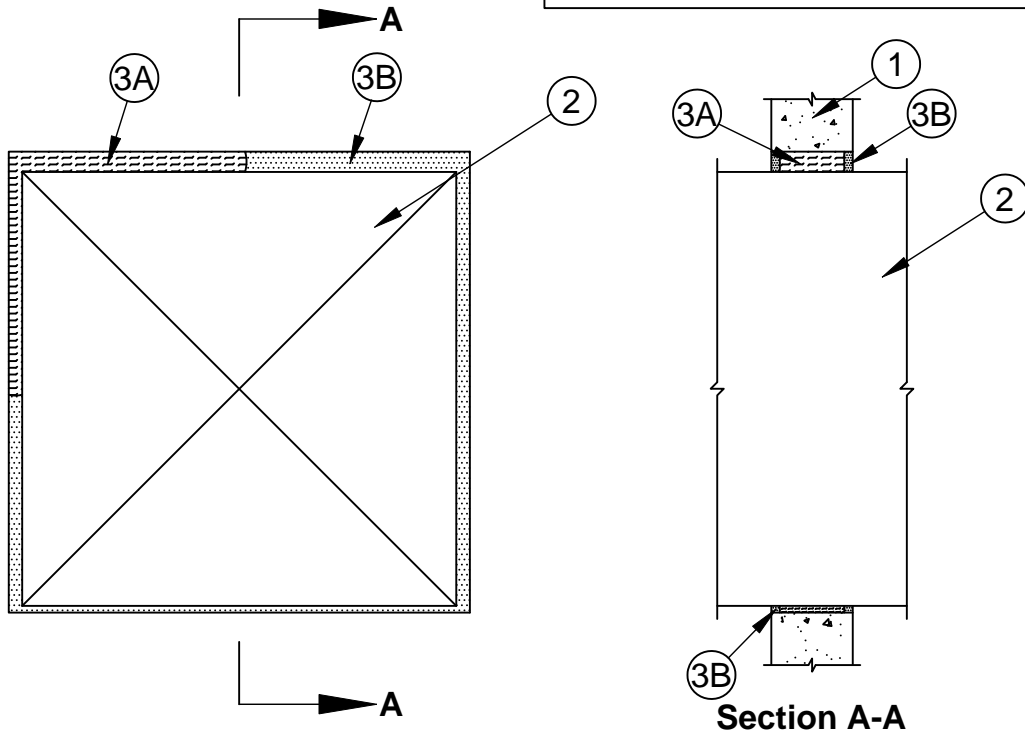


System No. W-J-7166



ANSI/UL1479 (ASTM E814)	CAN/ULC S115
F Rating - 2 Hr	F Rating - 2 Hr
T Rating - 1/4 Hr	FT Rating - 1/4 Hr
L Rating At Ambient - Less Than 1 CFM/sq ft	FH Rating - 2 Hr
L Rating At 400 F - Less Than 1 CFM/sq ft	FTH Rating - 1/4 Hr
	L Rating At Ambient - Less Than 5.1 L/s/m ²
	L Rating At 204 C - Less Than 5.1 L/s/m ²



1. **Wall Assembly** - Min 6 in. thick reinforced lightweight or normal weight (100-150 pcf or 1600-2400 kg/m³) concrete. Wall may also be constructed of any UL Classified **Concrete Blocks***. Max area of opening is 1156 sq in. (0.75 m²) with max dimension of 34 in. (864 mm).
See **Concrete Blocks** (CAZT) category in the Fire Resistance Directory for names of manufacturers.
2. **Steel Duct** - Max 32 by 32 in. (813 by 813 mm) No. 24 gauge (or heavier) steel duct to be installed within the opening. The annular space between the steel duct and the periphery of the opening shall be min 1/2 in. (13 mm) to max 1-1/2 in. (38 mm). Steel duct to be rigidly supported on both sides of the wall assembly.
3. **Firestop System** - The firestop system shall consist of the following:
 - A. **Packing Material** - Min 4 pcf (64 kg/m³) mineral wool batt insulation tightly packed into opening to full depth of the wall except for min 5/8 in. (16 mm) recess on each side of wall as required to accommodate fill material (Item 3B).
 - B. **Fill, Void or Cavity Material* - Sealant** - Min 5/8 in. (16 mm) thickness of fill material applied within annulus, flush with both surfaces of wall assembly.

SPECIFIED TECHNOLOGIES INC - SpecSeal Series SSS Sealant or SpecSeal LCI Sealant

* Indicates such products shall bear the UL or cUL Certification Mark for jurisdictions employing the UL or cUL Certification (such as Canada), respectively.



Specified Technologies Inc. 210 Evans Way Somerville, NJ 08876

Reproduced courtesy of Underwriters Laboratories, Inc.
Created or Revised: November 14, 2017

