



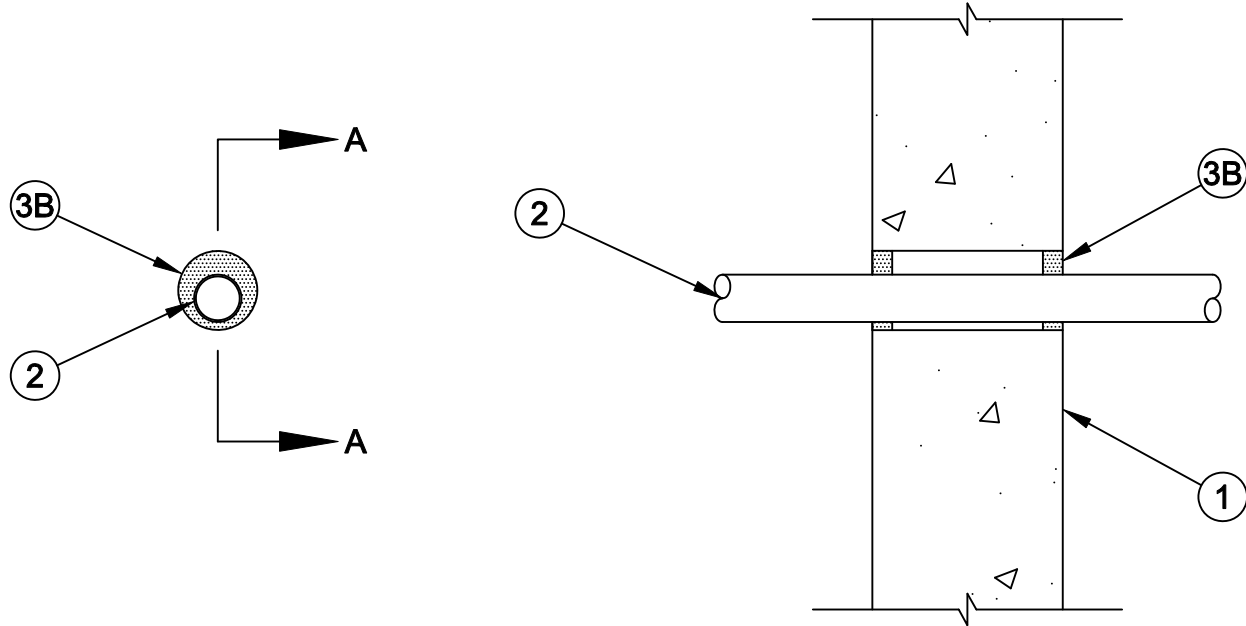
System No. W-J-2290

F Rating - 2 Hr

T Rating - 1-3/4 Hr

L Rating At Ambient - Less Than 1 CFM/sq ft

L Rating At 400 F - Less Than 1 CFM/sq ft



Section A-A

- Wall Assembly** - Min 6 in. thick reinforced lightweight or normal weight (100-150 pcf) concrete. Wall may also be constructed of any UL Classified **Concrete Blocks***. Max diam of opening is 2 in.

See **Concrete Blocks** (CAZT) category in the Fire Resistance Directory for names of manufacturers.

- Through Penetrant* - Flexible Hose** - Nom 1 in. (25 mm) diam (or smaller) Kevlar reinforced EPDM rubber hose with stainless steel braid for use in closed (process or supply) piping systems. One hose to be installed concentrically or eccentrically within the firestop system. Annular space to be min 1/4 in. (6 mm) to max 3/4 in. (19 mm). Penetrant to be rigidly supported on both sides of wall assembly.

- Firestop System** - The firestop system shall consist of the following:

A. **Packing Material** - (Optional, Not Shown) - Mineral wool batt insulation, foam backer rod or glass fiber insulation installed as a permanent form to facilitate installation of fill material (Item 3B). Packing material recessed from both surfaces of wall as required to accommodate the required thickness of fill material.

B. **Fill, Void or Cavity Material* - Sealant** - Min 5/8 in. (16 mm) thickness of fill material applied within annulus, flush with both surfaces of wall assembly.

SPECIFIED TECHNOLOGIES INC - SpecSeal Series SSS Sealant or SpecSeal LCI Sealant

* Indicates such products shall bear the UL or cUL Certification Mark for jurisdictions employing the UL or cUL Certification (such as Canada), respectively.



Specified Technologies Inc. 210 Evans Way Somerville, NJ 08876

Reproduced courtesy of Underwriters Laboratories, Inc.

Created or Revised: June 21, 2016

(800)992-1180 • (908)526-8000 • FAX (908)231-8415 • E-Mail:techserv@stifirestop.com • Website:www.stifirestop.com



W-J-2290
PAGE 1 OF 1