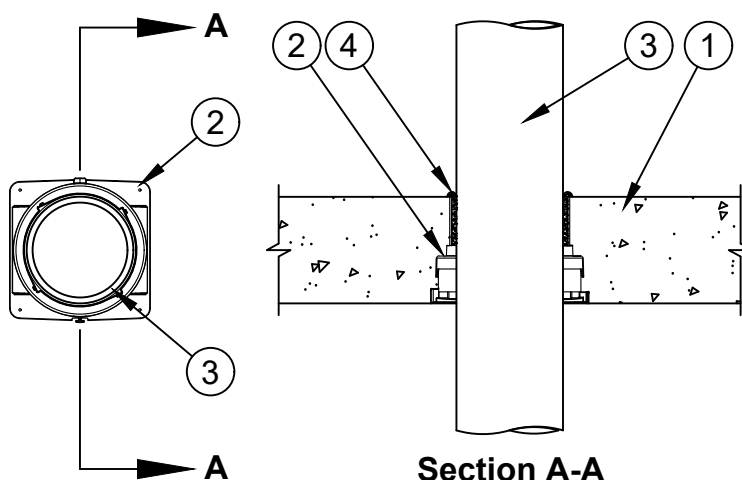




ANSI/UL1479 (ASTM E814)	CAN/ULC S115
F Rating - 3 Hr	F Rating - 3 Hr
T Rating - 1/4 Hr	FT Rating - 1/4 Hr
L Rating At Ambient - Less Than 1 CFM/ft2	FH Rating - 3 Hr
L Rating At 400 F - Less Than 1 CFM/ft2	FTH Rating - 1/4 Hr
W Rating - Class 1	L Rating At Ambient - Less Than 5.1 L/s/m2
	L Rating At 204 C - Less Than 5.1 L/s/m2



1. **Floor Assembly** - Min 4-1/2 in. (114 mm) thick reinforced lightweight or normal weight (100-150 pcf or 1600-2400 kg/m3) concrete floor.
- 1A. **Floor Assembly** - (Not Shown) - As an alternate to Item 1, the fire rated unprotected concrete and steel floor assembly shall be constructed of the material and in the manner specified in the individual D900 Series designs in the UL Fire Resistance Directory and as summarized below:
 - A. **Concrete** - Min 4-1/2 in. (114 mm) thick reinforced lightweight or normal weight (100-150 pcf or 1600-2400 kg/m3) concrete topping, as measured from the top plane of the steel floor units.
 - B. **Steel Floor and Form Units*** - Composite or non-composite max 3 in. (76 mm) deep galv steel fluted units as specified in the individual Floor-Ceiling Design.
2. **Firestop Device*** - Cast in place firestop device permanently embedded during the concrete pour or grouted into the concrete assembly in accordance with the accompanying installation instructions. The throat of the firestop device shall be cut flush with the top surface of the floor.
SPECIFIED TECHNOLOGIES INC - SpecSeal CD200, CD201, CD201C, CD202, CD200M, CD300, CD301, CD301C, CD302, CD300M, CD400, CD401, CD402, CD400M, CD600, CD601 or CD600M Cast In Firestop Device
- 2A. **Firestop Device*** - (Not Shown) - When Item 1A is used, a steel deck adapter kit consisting of steel plates and a nonmetallic extension tube shall be used in conjunction with Item 2. The deck adapter shall be installed in accordance with the accompanying installation instructions.
SPECIFIED TECHNOLOGIES INC - SpecSeal CD200DK, CD201DK, CD300DK, CD301DK, CD400DK, CD401DK, CD600DK or CD601DK Cast In Firestop Device Deck Adapter



Specified Technologies Inc. 210 Evans Way Somerville, NJ 08876

Reproduced courtesy of Underwriters Laboratories, Inc.
Created or Revised: May14, 2021



2B. **Firestop Device*** - (Not Shown) - When the concrete floor or concrete topping thickness over steel deck exceeds 8 in. (203 mm), a nonmetallic extension tube shall be used in conjunction with Item 2. The extension tube shall be installed in accordance with the accompanying installation instructions. The extension tube shall be cut flush with the top surface of the floor.

SPECIFIED TECHNOLOGIES INC - SpecSeal CD200X, CD300X, CD400X, CD600X or CD601X Cast In Firestop Device Extension

3. **Through Penetrant** - One metallic pipe, tube or conduit to be centered within the firestop system. Pipe, conduit or tube to be rigidly supported on both sides of the floor assembly. The following types and sizes of through penetrant may be used:

- A. **Steel Pipe** - Nom 6 in. (152 mm) diam (or smaller) Schedule 10 (or heavier) steel pipe.
- B. **Iron Pipe** - Nom 6 in. (152 mm) diam (or smaller) cast or ductile iron pipe.
- C. **Conduit** - Nom 6 in. (152 mm) rigid steel conduit or steel electrical metallic tubing (EMT).
- D. **Copper Pipe or Tubing** - Nom 6 in. (152 mm) diam (or smaller) Type L (or heavier) copper tubing or Regular (or heavier) copper pipe.

Nom Pipe Diam	Firestop Device
1-1/2 or 2 in. (38 or 51 mm)	CD200, CD201, CD201C, CD202, CD200M
2-1/2 or 3 in. (64 or 76 mm)	CD300, CD301, CD301C, CD302, CD300M
3-1/2 or 4 in. (89 or 102 mm)	CD400, CD401, CD402, CD400M
6 in. (152 mm)	CD600, CD601, CD600M

4. **Foam Insulation (BLIS)*** - Foam insulation applied to fill annulus between penetrant and throat of firestop device, extending from gasket of device to the top surface of the floor. Additional foam applied to form a 1 in. diam bead at the interface of the throat of the firestop device and the top surface of the floor.

SPECIFIED TECHNOLOGIES INC - SmokeBlock Fireblocking Foam

* Indicates such products shall bear the UL or cUL Certification Mark for jurisdictions employing the UL or cUL Certification (such as Canada), respectively.



Specified Technologies Inc. 210 Evans Way Somerville, NJ 08876

Reproduced courtesy of Underwriters Laboratories, Inc.
Created or Revised: May14, 2021

