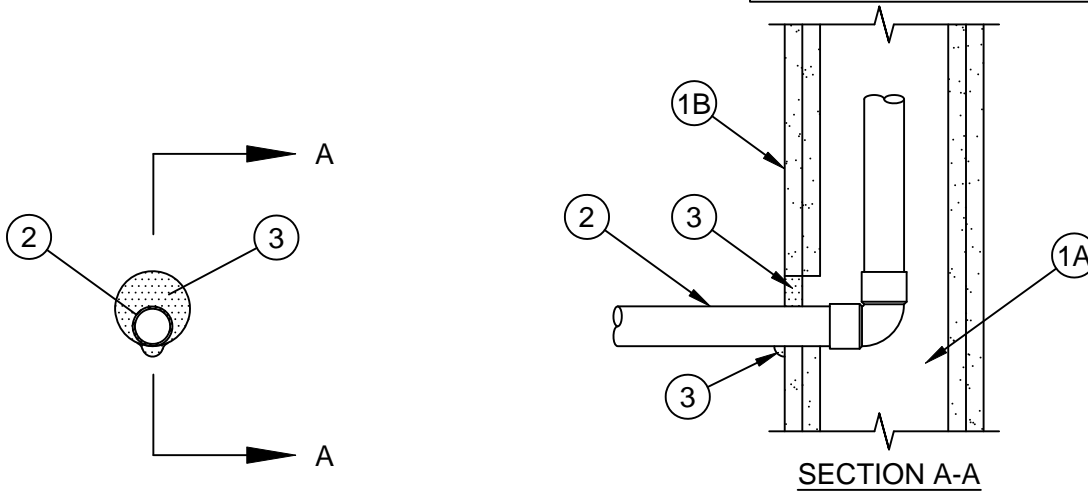


System No. W-L-1527



ANSI/UL1479 (ASTM E814)	CAN/ULC S115
F Ratings - 1 and 2 Hr (See Item 1)	F Ratings - 1 and 2 Hr (See Item 1)
T Ratings - 1 and 2 Hr (See Item 1)	FT Ratings - 1 and 2 Hr (See Item 1)
L Rating At Ambient - Less Than 1 CFM/sq ft	FH Ratings - 1 and 2 Hr (See Item 1)
L Rating At 400 F - Less Than 1 CFM/sq ft	FTH Ratings - 1 and 2 Hr (See Item 1)
	L Rating At Ambient - Less Than 5.1 L/s/m ²
	L Rating At 400 F - Less Than 5.1 L/s/m ²



1. **Wall Assembly** - The 1 or 2 hr fire-rated gypsum wallboard/stud wall assembly shall be constructed of the materials and in the manner specified in the individual U300, U400, V400 or W400 Series Wall and Partition Design in the UL Fire Resistance Directory and shall include the following construction features:
 - A. **Studs** - Wall framing may consist of either wood studs or steel channel studs. Wood studs to consist of nom 2 by 4 in. (51 by 102 mm) lumber spaced 16 in. (406 mm) OC. Steel studs to be min 3-1/2 in. (89 mm) wide and spaced max 24 in. (610 mm) OC.
 - B. **Gypsum Board*** - One or two layers of nom 5/8 in. (16 mm) thick gypsum board as specified in the individual Wall and Partition Design. Max diam of opening is 5 in. (127 mm).
The hourly F, T, FT, FH and FTH Ratings of the firestop system are equal to the hourly fire rating of the wall assembly in which it is installed.
2. **Metallic Penetrant** - One metallic pipe, conduit or tube to be installed either concentrically or eccentrically, penetrating wall assembly on one side of wall. The annular space between the pipe, conduit or tubing and the periphery of opening shall be min 0 in. (point contact) to max 7/8 in. (22 mm). Pipe, conduit or tubing shall be rigidly supported within the wall and on the penetrated side of the wall assembly. The following types and sizes of metallic pipes, conduits or tubing may be used:
 - A. **Steel Pipe** - Nom 3 in. (76 mm) diam (or smaller) Schedule 5 (or heavier) steel pipe.
 - B. **Iron Pipe** - Nom 3 in. (76 mm) diam (or smaller) cast or ductile iron pipe.
 - C. **Conduit** - Nom 3 in. (76 mm) diam (or smaller) steel electrical metallic tubing (EMT), nom 3 in. (76 mm) diam steel conduit or nom 1 in. (25 mm) diam (or smaller) flexible steel conduit.
 - D. **Copper Tubing** - Nom 1 in. (25 mm) diam (or smaller) Type L (or heavier) copper tubing.
 - E. **Copper Pipe** - Nom 1 in. (25 mm) diam (or smaller) Regular (or heavier) copper pipe.
3. **Fill, Void or Cavity Material* - Sealant** - Min 5/8 in. (16 mm) thickness of fill material applied within annulus, flush with surface of wall assembly. At point contact location, min 3/8 in. (10 mm) diam bead of fill material to be applied at the penetrant/gypsum board interface.

SPECIFIED TECHNOLOGIES INC - SpecSeal Series SSS Sealant or SpecSeal LCI Sealant

* Indicates such products shall bear the UL or cUL Certification Mark for jurisdictions employing the UL or cUL Certification (such as Canada), respectively.



Specified Technologies Inc. 210 Evans Way Somerville, NJ 08876

Reproduced courtesy of Underwriters Laboratories, Inc.
Created or Revised: August 26, 2016

(800)992-1180 • (908)526-8000 • FAX (908)231-8415 • E-Mail:techserv@stifirestop.com • Website:www.stifirestop.com



W-L-1527
PAGE 1 OF 1