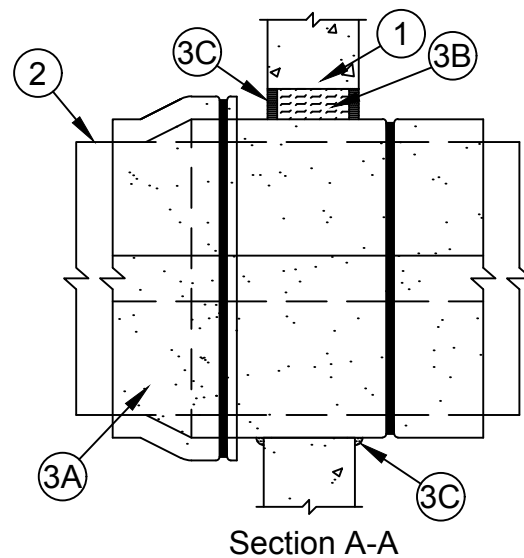
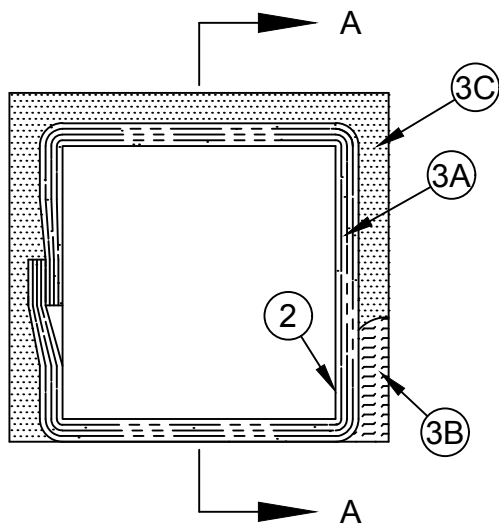


## System No. W-J-7170



ANSI/UL1479 (ASTM E814)	CAN/ULC S115
F Rating - 2 Hr	F Rating - 2 Hr
T Rating - 2 Hr	FT Rating - 2 Hr
L Rating At Ambient - Less Than 1 CFM/ft2	FH Rating - 2 Hr
L Rating At 400 F - Less Than 1 CFM/ft2	FTH Rating - 2 Hr
	L Rating At Ambient - Less Than 5.1 L/s/m2
	L Rating At 204 C - Less Than 5.1 L/s/m2



1. **Wall Assembly** - Min 6 in. (152 mm) thick reinforced lightweight or normal weight (100-150 pcf or 1600-2400 kg/m3) concrete. Wall may also be constructed of any UL Classified **Concrete Blocks\***. Max area of opening is 78 ft.2 (7.3 m2) with a max dimension of 107 in. (272 cm).  
See **Concrete Blocks** (CAZT) in Fire Resistance Directory for names of manufacturers.
2. **Steel Air Duct** - One steel duct to be installed within the firestop system. Duct to be rigidly supported on both sides of wall assembly. Min 26 gauge (0.5 mm) galv steel duct having a max perimeter dimension of 400 in. (10.16 m) and a max individual dimension of 100 in. (2.54 m).
3. **Firestop System** - The firestop system shall consist of the following:
  - A. **Duct Wrap Materials\*** - Nom 1-1/2 in. (38 mm) thick blanket totally encapsulated within foil-scrim facers. The steel air duct shall be wrapped with one layer of duct wrap installed in accordance with Ventilation Assembly Nos. V-32, V-34 or V-36. See Ventilation Duct Assemblies in Vol. 2 of the Fire Resistance Directory. When steel angles (Item 3D) are used, the edges of the duct wrap material are to abut the protruding leg of the angle and the tight seam is to be covered with an additional 6 in. (152 mm) wide "collar" of duct wrap. The annular space between the insulated duct and the periphery of the opening shall be min 0 in. (point contact) to max 2 in. (51 mm).

**UNIFRAX I LLC** - FyreWrap Elite 1.5 Duct Insulation



**Specified Technologies Inc. 210 Evans Way Somerville, NJ 08876**

Reproduced courtesy of Underwriters Laboratories, Inc.  
Created or Revised: November 9, 2018



- A1. **Duct Wrap Materials\*** - (Not Shown) - As an alternate to Item 3A, nom 1-1/2 in. (38 mm) thick blanket totally encapsulated within foil-scrim facers. The steel air duct shall be wrapped with two layers of duct wrap installed in accordance with Ventilation Assembly No. V-36. See Ventilation Duct Assemblies in Vol. 2 of the Fire Resistance Directory. When steel angles (Item 3D) are used, the edges of the duct wrap material are to abut the protruding leg of the angle and the tight seam is to be covered with an additional 6 in. (152 mm) wide "collar" of duct wrap. The annular space between the insulated duct and the periphery of the opening shall be min 0 in. (point contact) to max 2 in. (51 mm).

**UNIFRAX I LLC** - FyreWrap Elite 1.5 Duct Insulation

- B. **Packing Material** - Min 4-3/4 in. (121 mm) thickness of unfaced scrap duct wrap material or min 4 pcf (64 kg/m<sup>3</sup>) mineral wool batt insulation firmly packed into the opening as a permanent form. Packing material to be recessed from both surfaces of wall as required to accommodate the required thickness of fill material (Item 3C). When steel angles (Item 3D) are used, packing material shall be firmly packed into opening as a permanent form between the bare steel duct and the periphery of the opening.
- C. **Fill, Void or Cavity Material\*- Sealant** - Min 5/8 in. (16 mm) thickness of fill material applied within annulus, flush with both surfaces of wall assembly. A min 1/4 in. (6 mm) diam bead of sealant shall be applied at the concrete wall/insulated duct interface on both surfaces of wall assembly.

**SPECIFIED TECHNOLOGIES INC** - SpecSeal Series SSS, SpecSeal LC150 Sealant, SpecSeal LCI Sealant, or SpecSeal SIL300 Sealant

- D. **Retaining Angles** - (Not Shown) - When dimensions of duct exceed 84 by 84 in. (213 by 213 cm), min No. 16 gauge (0.059 in. (1.5 mm)) galv steel angles sized to lap steel duct a min of 2 in. (51 mm) and to lap wall surfaces a min of 1 in. (25 mm). Angles attached to steel duct on both sides of wall within 1 in. (25 mm) of wall with min No. 10 by 1/2 in. (13 mm) long steel sheet metal screws or welds located a max of 1 in. (25 mm) from each end of steel duct and spaced a max of 6 in. (152 mm) OC.

\* Indicates such products shall bear the UL or cUL Certification Mark for jurisdictions employing the UL or cUL Certification (such as Canada), respectively.



**Specified Technologies Inc. 210 Evans Way Somerville, NJ 08876**

Reproduced courtesy of Underwriters Laboratories, Inc.  
Created or Revised: November 9, 2018

(800)992-1180 • (908)526-8000 • FAX (908)231-8415 • E-Mail:techserv@stifirestop.com • Website:www.stifirestop.com



W-J-7170  
PAGE 2 OF 2